



**LOW MAINTENANCE
BATTEN CLADDING
WITH GREAT VISUAL
AESTHETICS**



PRODUCT BROCHURE



Bison composite batten cladding offers the low maintenance, high quality and the robustness you'd expect from a composite building material



KEY FEATURES

VISUAL AESTHETICS

Our **wood plastic composite cladding planks** give the appearance of timber or Cedar slatted cladding with a lifelike woodgrain timber finish available in three colours: Ash Grey, Black or Oak. Combined with colour matched accessories Bison Composite Batten Cladding can be installed Vertically or horizontally.

EASY TO INSTALL

With minimal trims and planks sized ideally for vertical cladding, Bison Batten Cladding is a simple and easy to use system with minimal need for cutting, offering the elegant design and easy installation of Cedar or Siberian Larch cladding with all the benefits of a composite material.

HARD-WEARING

Bison's hard-wearing capping ensures the material stands up to all weather conditions, is UV stable, scratch resistant and non-porous. Being a composite material ensures it is resistant to rot, mould and insects.

MULTI PURPOSE USES

Bison Cladding can be utilised for a wide variety of projects including but not limited to cladding, slatted fencing, internal feature walls or even planters.

LOW MAINTENANCE

Low maintenance product that will not need staining or painting. Simply hose or jet wash clean when required.

ENVIRONMENTALLY FRIENDLY

Manufactured from 82% recycled material (wood fibre and HDPE plastic). Remaining ingredients are additives for bonding, UV stabilisers and colour pigments.

BENEFITS AND FEATURES INCLUDE



LOW
MAINTENANCE



LIGHT
WEIGHT



UV
STABILITY



SCRATCH
RESISTANT



MOULD
RESISTANT



NON
POROUS



95%
RECYCLABLE



TIMBER
EFFECT

3 COLOUR FINISHES

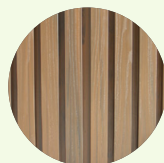
Available in
3 colours



ASH GREY



BLACK



OAK



The mark of
responsible forestry



BISON WPC BATTEN CLADDING PLANK

BT1PLANK-**
Main Cladding Plank Material

DETAILS

COLOUR - Ash Grey, Black or Oak

LENGTH - 2700mm

WIDTH - 219mm

COVER WIDTH - 200mm

INDIVIDUAL BATTEN WIDTH - 36.5mm

GAPS BETWEEN BATTENS - 13.5mm

DEPTH - 26mm

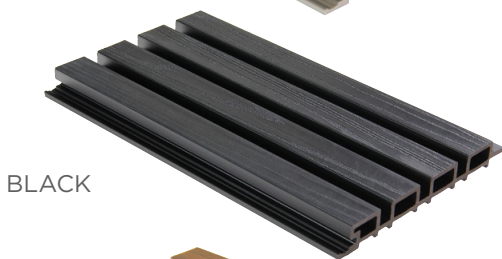
COVERAGE - 0.54m² per board (or 1.85 boards per M² without wastage)

FIRE RATING - B f1-S1

WEIGHT - 8Kg per board



ASH GREY



BLACK



OAK

BISON BATTEN CLADDING L CORNER

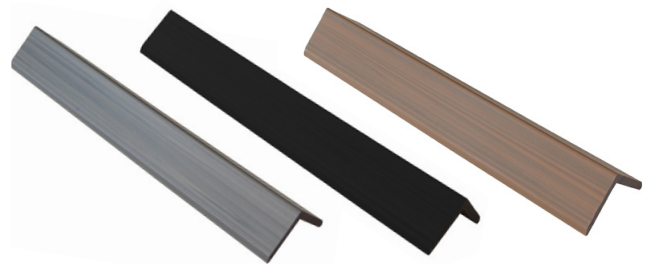
BT1CORNER-** For external corners of building and window/door reveals

DETAILS

COLOUR - Ash Grey, Black or Oak

LENGTH - 2500mm

LEGS DIMS - Legs Dims - 56mm x 51mm



BISON BATTEN CLADDING STEEL DRIP TRIM

BT1DRIP-**
For window or door heads

DETAILS

COLOUR - Ash Grey, Black or Oak

LENGTH - 2000mm

HIDDEN LEG (behind cladding) - 20mm

KICK OUT LEG - 30mm

FACE LEG - 15mm

5MM WELTED SAFETY DRIP EDGE

MATERIAL THICKNESS - 1mm



Images not to scale

**SWATCHES
AVAILABLE**

Can't decide on a colour?
Order a sample box via our website
at www.bisonsystems.co.uk



BISON BATTEN CLADDING EDGE BOARD

BT1EB- For deeper reveals and other finishing details**

DETAILS

COLOUR - Ash Grey, Black or Oak

LENGTH - 2500mm

WIDTH - 140mm

THICKNESS - 12mm



BISON BATTEN CLADDING COLOUR SCREW

BT1CSREW- For any visible fixings including corners**

DETAILS

COLOUR - Ash Grey, Black or Oak

QUANTITY - 100 per bag

LENGTH - 35mm

DIAMETER - Diameter - 4mm

HEAD - Countersunk Pozi head

MATERIAL - Stainless Steel



Images not to scale

BISON BATTEN CLADDING FIXING SCREW

BT1SCREW Main fixing for cladding, hidden by the lap of the plank

DETAILS

COLOUR - N/A

QUANTITY - 100 per bag

LENGTH - 25mm

DIAMETER - Diameter - 4mm

HEAD - Countersunk Pozi head

MATERIAL - Stainless Steel



FOR MORE INFORMATION

For more information on Batten Cladding or our other composite products
visit www.bisonsystems.co.uk
Tel: 01342 337 160 email: info@bisonsystems.co.uk