

PRODUCT SHEET  
James Hardie™  
Fibre Cement Cladding

southern  
sheeting



If you're looking for a versatile, low maintenance weatherboard with a natural texture, look no further than Hardie® Fibre Cement Cladding.

A popular facade for builders, architects and homeowners alike, protecting and beautifying millions of homes worldwide.

Key benefits include:

- Durability
- Low maintenance
- Fire resistance
- Rot resistant
- Pest resistance

visit [www.southernsheeting.co.uk](http://www.southernsheeting.co.uk) for our full range or call to speak to our friendly sales team

[f @southernsheetingsupplies](#) [t @SSSRoofing](#) [in southernsheeting](#) [i southernsheeting](#)



# Introducing James Hardie cladding products



BBA Certified Hardie® cladding has been assessed by the British Board of Agrément and has been awarded BBA certificate number 04/4147

Hardie® Plank products include two ranges, made from advanced material fibre cement. Our boards are non-combustable with a fire rating of A2-s1, d0.

Hardie® Plank is a traditional overlap board while Hardie® Plank VL offers a flush tongue and groove style finish that can be installed horizontally or vertically..

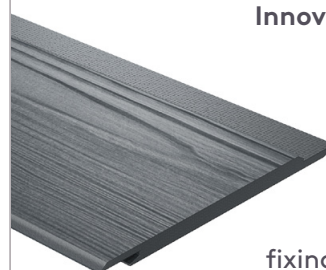
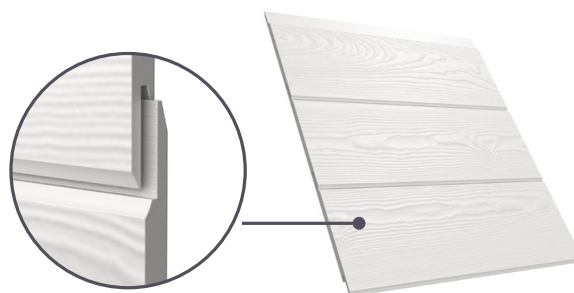
## Hardie® Plank Fibre Cement Cladding

**Dimensions:** 3600 x 180 x 8mm  
**Weight per board:** 7.4kg  
**Boards per m<sup>2</sup>:** 1.85  
**Visible surface:** 150mm (with a 30mm overlap)  
**Colours:** 10 colours from stock (other colours available to order)  
**Textures:** Cedar



## Hardie® VL Plank Fibre Cement Cladding

**Dimensions:** 3600 x 214 x 11mm  
**Weight per board:** 10.5kg  
**Boards per m<sup>2</sup>:** 1.52  
**Visible surface:** 182mm  
**Colours:** 8 colours from stock  
**Textures:** Cedar



**Innovative interlocking system**  
Hardie® VL Planks offers hidden fixing, thanks to its innovative tongue and groove system that does not require any additional accessories for fixing and can easily be nailed.

# Colours and textures

Hardie® Fibre cement is available in a variety of colours using their ColourPlus™ technology which has been engineered to better withstand UV rays, providing up to 30% more fade resistance than many alternative cladding finishes. Multiple coats are applied for extra durability & between coats we cure the finish in a controlled environment for an even stronger bond that resists chipping, peeling and cracking.

10 colours for Hardie® Plank cladding (Smooth finish and other colours available to order\*)

8 colours for Hardie® VL Plank cladding

Unique ColourPlus™ Technology finish

## Colour chart

■ Hardie® Plank colours held in stock

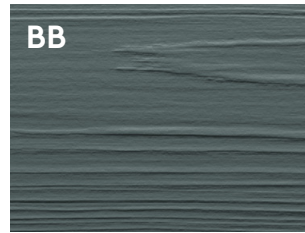
● Hardie® VL Plank colours held in stock



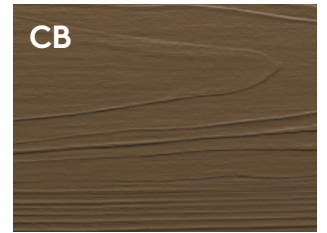
Anthracite Grey ■ ●



Arctic White ■ ●



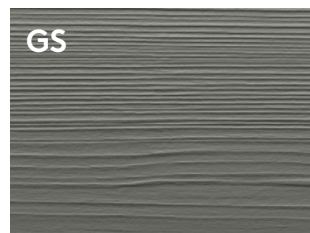
Boothbay Blue ■



Chestnut Brown ●



Cobble Stone ■



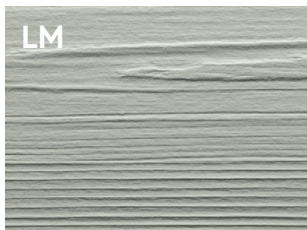
Grey Slate ■ ●



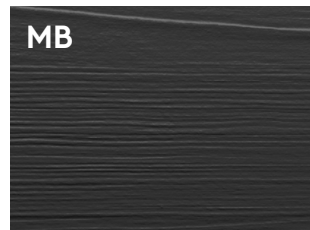
Iron Grey ■



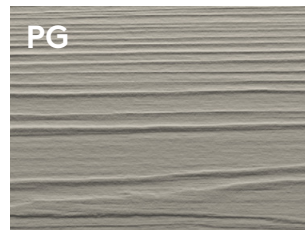
Khaki Brown ●



Light Mist ■ ●



Midnight Black ■ ●



Pearl Grey ■



Sail Cloth ■ ●

\*Other Hardie Plank colours and smooth finish available to order in full pallet quantities only (216 boards) - please phone for details

APPROVED  
SUPPLIERS OF



JamesHardie™

# PRODUCT SPEC

## Trims - Metal profiles

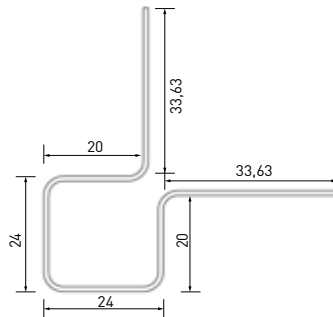
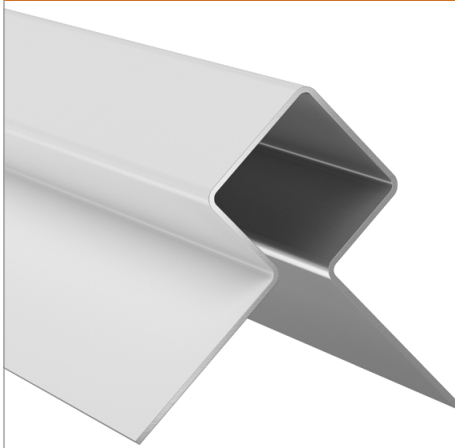
Our selection of trims is the final touch that completes your home's design. Accentuate corners, columns, doors, windows and more with our complementary trims.



## Trims - Metal profiles

### Hardie™ Plank External Corner

For use on both Hardie™ Plank and Hardie™ VL Plank ranges



Code HP1WBEC-\*\*

Length: 3m

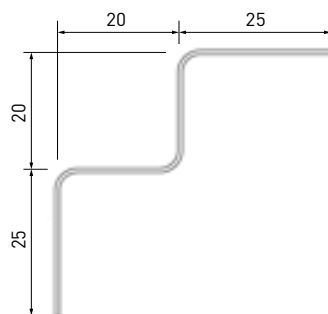
Available from stock in 12 colours

Used vertically for corners of the buildings

Should be installed prior to cladding boards being fitted.

### Hardie™ Plank Internal Corner

For use on both Hardie™ Plank and Hardie™ VL Plank ranges



Code HP1WBIC-\*\*

Length: 3m

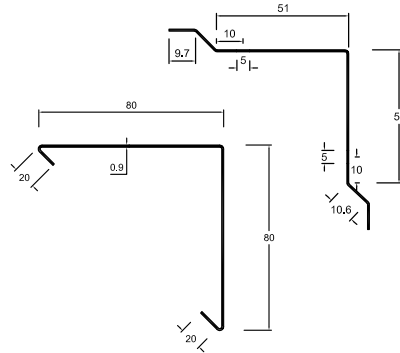
Available from stock in 12 colours

Should be installed prior to cladding boards being fitted.

# Southern Sheeting stock a full range of metal trims for to suit both Hardie plank and Hardie VL systems

All trims are manufactured from a 2-layer polyester precoat paint system to match the board colours and come with a removable film for protection during installation.

## Hardie™ VL Plank - 2 Part External Corner Trim



Code HP1VLEC-\*\*

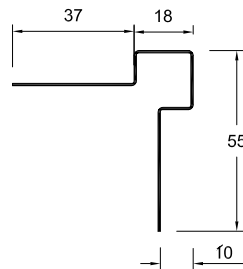
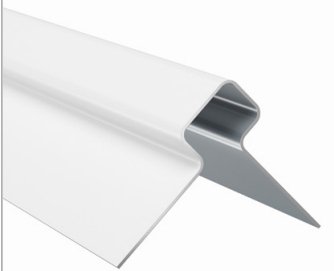
Length: 3m

Available from stock in 8 colours

Plain colour Internal piece to be screwed into place and colour matched clip-on external piece.

Improved speed of installation as cut edges of boards are covered and so do not need to be cut so precisely.

## Hardie™ VL Plank Window Reveal Trim



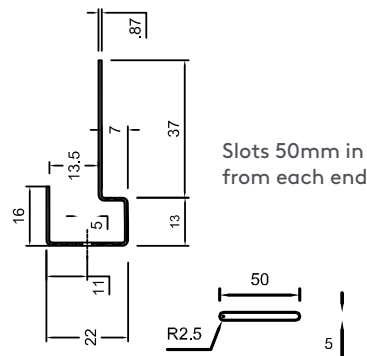
Code HP1VLRT-\*\*

Length: 3m

Available from stock in 8 colours

Used vertically at door and window openings to transition from the buildings face-side cladding to the reveals.

## Hardie™ VL Plank Window Head and Vertical Starter Trim



Code HP1VLWH-\*\*

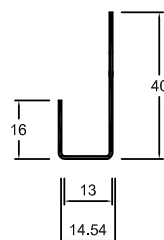
Length: 3m

Available from stock in 8 colours

Horizontally at a door or window head

For vertical Hardie® VL installation, this trim will be used at the bottom of the cladding to support the board as a starter profile

## Hardie™ VL Plank J Profile



Code HP2VLJP

Length: 3m

Available from stock in 8 colours

Used to cap off the edge of a VL Plank to give a neat finish and to hide any cut edges.

## Trims - Metal profiles

### Hardie™ VL Plank Starter Profile



Code HP1VLST

Length: 3m

Plain aluminium only

Used to hang the first plank on a horizontally installed VL system project

### Hardie™ Plank starter ventilation profile



Available in three standard depths		Code
25mm	3m long, Plain aluminium. Use with 25mm deep battens. Hardie Plank overlap system	HP1VST-25
38mm	3m long, Plain aluminium. Use with 38mm deep battens. Hardie Plank overlap system	HP1VST-38
50mm	3m long, Plain aluminium. Use with 50mm deep battens. Hardie Plank overlap system	HP1VST-50

These trims are used to ensure the first board in a run of cladding has the correct 'kick-out' whilst also not blocking the battens and maintaining airflow behind the boards.

### Top and Bottom vent mesh/perforated closure



Depths available	Colour	Code
3.0m long 30mm x 25mm	Plain	HP1TV-25
2.5m long 30mm x 40mm	Plain	EW11M40
2.5m long 30mm x 50mm	Plain	EW11M50
2.5m long 30mm x 40mm	Black	EW11M40-BK
2.5m long 30mm x 50mm	Black	EW11M50-BK

Perforated closure/insect mesh is to be used to cap off battens at the top and bottom of all openings including above and below windows/doors etc. They prevent anything nesting or building up in the crucial air flow gap.

### Walther strong clad tape

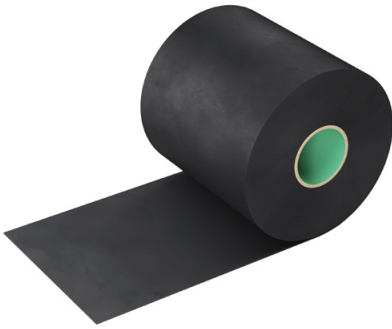


Width	Code
20m roll Walther Strong Clad tape 50mm	EW1CLADTAPE-50

Cladtape self-adhesive tape should be used to protect timber battens used when installing weatherboard cladding

## Accessories

### Hardie™ EPDM tape



Widths available	Code
25m roll Hardie EPDM tape 60mm	HP1EPDM-60
25m roll Hardie EPDM tape 80mm	HP1EPDM-80
25m roll Hardie EPDM tape 100mm	HP1EPDM-100
25m roll Hardie EPDM tape 120mm	HP1EPDM-120

UV Resistant tape to cover the vertical joints between planks and between planks and trims/windows/doors.  
NOT Self-adhesive. Requires staples/pins to install to timber battens.

### Hardie™ Seal Edge Coating

Code HP1TP

Size 1 litre

For cut edges only. Not to be used on face of plank. Available from stock in 12 colours.



### Hardie™ VL Plank Screw

Code HP1VLSCREW

Quantity per box - 200

Allow 7 fixings per plank

T15 Torx, A2 stainless steel,  
4.2mm x 40mm long with a  
10mm low profile head



### Hardie™ Plank Coloured Screws for Timber



Code HP1CS-\*\*

T20 Torx coated head, A2 stainless steel, 4.8mm x 38mm long with 12 mm domed head diameter. Primarily used on the top run of boards where a fixing will be visible.

Not for use with 25mm batten application

### Countersunk Stainless Steel Fibre Cement Screw



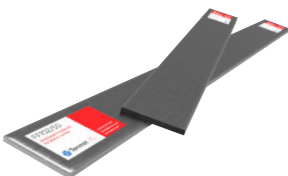
Code EW1SCREW

Dimensions: 4.2mm x 45mm long

Quantity: 200no. Allow 7 fixings per plank.

Not suitable for use with 25mm battens or Hardie VL boards.

### Tenmat FF102/50 Ventilated Fire Barrier



Code EW1TENMAT

Dimensions: 6 mm x 75 mm x 1000 mm

A rigid, high expansion intumescent strip encased in aluminium foil. Designed for use within cavities of up to 50mm. Fire rated up to 120 minutes.

## Accessories

### Gecko Gauge



Code HP1GECKO

Gauges to support weatherboard for a one person installation. For Hardie® Plank overlap weatherboard only.

### Hardie™ Guillotine cutting tool



Code HP1GUIL

For all square edge cuts, eliminating dust. The preferred method of cutting Hardie® Plank boards.

### Profi blades



Blade sizes	Code
165mm (4 teeth) 20mm bore size	FA1PROFBLADE165
190mm (6 teeth) 30mm bore size	FA1PROFBLADE190
216mm (6 teeth) 30mm bore size	FA1PROFBLADE216
235mm (6 teeth) 30mm bore size	FA1PROFBLADE235

A saw blade with polycrystalline diamond (PCD) teeth that cut effortlessly through fibre cement fibre board products.

They offer amazing benefits to TCT Blades. They last 50 times as long, provide a cleaner cut through more fragile surfaces, can cut up to 3 times faster whilst creating significantly less dust.

### Profi Jigsaw Blade - 100mm (Pack of 3)



Blade size	Code
100mm long, 1.2mm thick	FA1PROFJIG100

- Profi fibre cement and plaster jigsaw blades
- Tungsten Carbide
- Long lasting material designed to endure hard wearing materials such as fibre cement

## Enquiries - our depots

### Midlands

Unit 4a/4b Wymeswold Business Quarter,  
Wymeswold Lane, Loughborough LE12 5BS  
Tel: 01509 380 283

### South East

Saint Hill Farm Business Park, West Hoathly Road,  
East Grinstead, West Sussex RH19 4NG  
Tel: 01342 315 300